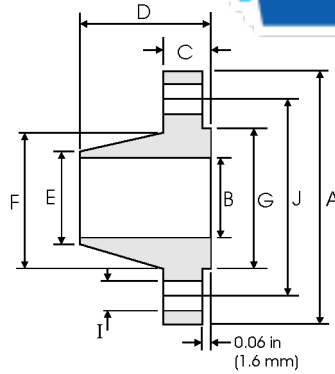


Weld Neck Flanges - ANSI B16.5



Class 150 lb

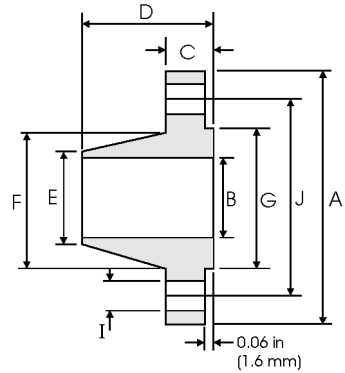
Pipe		Flange Data				Hub Data		Raised Face	Drilling Data			Weight
Nominal Pipe Size		A	B	C	D	E	F	G	H	I	J	
	Outside Diameter	Overall Diameter	Inside Diameter	Flange Thickness min	Overall Length	Diameter at Weld Bevel	Hub Diameter	Face Diameter	Number of Holes	Bolt Hole Diameter	Diameter of Circle of Holes	kg/ piece
	in mm	in mm	in mm	in mm	in mm	in mm	in mm	in mm		in mm	in mm	
1/2	0.840 21.30	3.500 88.90	0.620 15.70	0.440 11.20	1.880 47.80	0.840 21.30	1.190 30.20	1.380 35.00	4	0.620 15.70	2.380 60.45	0.48
3/4	1.050 26.70	3.880 98.60	0.820 20.80	0.500 12.70	2.060 52.30	1.050 26.70	1.500 38.10	1.690 42.90	4	0.620 15.70	2.750 69.85	0.71
1	1.315 33.40	4.250 108.0	1.050 26.70	0.560 14.20	2.190 55.60	1.320 33.50	1.940 49.30	2.000 50.80	4	0.620 15.70	3.120 79.25	1.01
1 1/4	1.660 42.20	4.620 117.3	1.380 35.10	0.620 15.70	2.250 57.15	1.660 42.20	2.310 58.70	2.500 63.50	4	0.620 15.70	3.500 88.90	1.33
1 1/2	1.900 48.30	5.000 127.0	1.610 40.90	0.690 17.50	2.440 62.00	1.900 48.30	2.560 65.00	2.880 73.15	4	0.620 15.70	3.880 98.60	1.72
2	2.375 60.30	6.000 152.4	2.070 52.60	0.750 19.10	2.500 63.50	2.380 60.45	3.060 77.70	3.620 91.90	4	0.750 19.10	4.750 120.7	2.58
2 1/2	2.875 73.00	7.000 177.8	2.470 62.70	0.880 22.40	2.750 69.85	2.880 73.15	3.560 90.40	4.120 104.6	4	0.750 19.10	5.500 139.7	4.11
3	3.500 88.90	7.500 190.5	3.070 78.00	0.940 23.90	2.750 69.85	3.500 88.90	4.250 108.0	5.000 127.0	4	0.750 19.10	6.000 152.4	4.92
3 1/2	4.000 101.6	8.500 215.9	3.550 90.20	0.940 23.90	2.810 71.40	4.000 101.6	4.810 122.2	5.500 139.7	8	0.750 19.10	7.000 177.8	6.08
4	4.500 114.3	9.000 228.6	4.030 102.4	0.940 23.90	3.000 76.20	4.500 114.3	5.310 134.9	6.190 157.2	8	0.750 19.10	7.500 190.5	6.84
5	5.563 141.3	10.00 254.0	5.050 128.3	0.940 23.90	3.500 88.90	5.560 141.2	6.440 163.6	7.310 185.7	8	0.880 22.40	8.500 215.9	8.56
6	6.625 168.3	11.00 279.4	6.070 154.2	1.000 25.40	3.500 88.90	6.630 168.4	7.560 192.0	8.500 215.9	8	0.880 22.40	9.500 241.3	10.6
8	8.625 219.1	13.50 342.9	7.980 202.7	1.120 28.40	4.000 101.6	8.630 219.2	9.690 246.1	10.62 269.7	8	0.880 22.40	11.75 298.5	17.6
10	10.75 273.0	16.00 406.4	10.02 254.5	1.190 30.20	4.000 101.6	10.75 273.0	12.00 304.8	12.75 323.8	12	1.000 25.40	14.25 362.0	24.0
12	12.75 323.8	19.00 482.6	12.00 304.8	1.250 31.75	4.500 114.3	12.75 323.8	14.38 365.3	15.00 381.0	12	1.000 25.40	17.00 431.8	36.5
14	14.00 355.6	21.00 533.4	To be specified by Purchaser	1.380 35.10	5.000 127.0	14.00 355.6	15.75 400.1	16.25 412.7	12	1.120 28.40	18.75 476.3	48.4
16	16.00 406.4	23.50 596.9		1.440 36.60	5.000 127.0	16.00 406.4	18.00 475.2	18.50 469.9	16	1.120 28.40	21.25 539.8	60.6
18	18.00 457.2	25.00 635.0		1.560 39.60	5.500 139.7	18.00 457.2	19.88 505.0	21.00 533.4	16	1.250 31.75	22.75 577.9	68.3
20	20.00 508.0	27.50 698.5		1.690 42.90	5.690 144.5	20.00 508.0	22.00 558.8	23.00 584.2	20	1.250 31.75	25.00 635.0	84.5
24	24.00 609.6	32.00 812.8		1.880 47.80	6.000 152.4	24.00 609.6	26.12 663.4	27.25 692.1	20	1.380 35.10	29.50 749.3	115

Notes



- Dimension B corresponds to the pipe inside diameter. Values quoted assume 40S/Standard wall thickness.
- Weights are based on manufacturer's data and are approximate.
- Flat face flanges may be provided at full thickness, C, or with raised face removed (the latter is nonstandard).



Weld Neck Flanges - ANSI B16.5



Class 300 lb

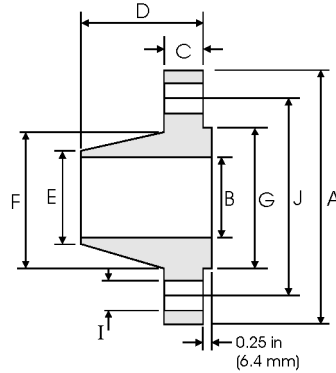
Pipe		Flange Data				Hub Data		Raised Face	Drilling Data			Weight
Nominal Pipe Size		A	B	C	D	E	F	G	H	I	J	
	Outside Diameter	Overall Diameter	Inside Diameter	Flange Thickness min	Overall Length	Diameter at Weld Bevel	Hub Diameter	Face Diameter	Number of Holes	Bolt Hole Diameter	Diameter of Circle of Holes	kg/ piece
	in mm	in mm	in mm	in mm	in mm	in mm	in mm	in mm		in mm	in mm	
1/2	0.840	3.750	0.620	0.560	2.060	0.840	1.500	1.380	4	0.620	2.620	0.75
	21.30	95.20	15.70	14.20	52.30	21.30	38.10	35.00		15.70	66.55	
3/4	1.050	4.620	0.820	0.620	2.250	1.050	1.880	1.690	4	0.750	3.250	1.26
	26.70	117.3	20.80	15.70	57.15	26.70	47.70	42.90		19.00	82.50	
1	1.315	4.880	1.050	0.690	2.440	1.320	2.120	2.000	4	0.750	3.500	1.52
	33.40	123.9	26.70	17.50	62.00	33.50	53.80	50.80		19.00	88.90	
1 1/4	1.660	5.250	1.380	0.750	2.560	1.660	2.500	2.500	4	0.750	3.880	2.03
	42.20	133.3	35.10	19.00	65.00	42.20	63.50	63.50		19.00	98.50	
1 1/2	1.900	6.120	1.610	0.810	2.690	1.900	2.750	2.880	4	0.880	4.500	2.89
	48.30	155.4	40.90	20.60	68.30	48.30	69.85	73.15		22.30	114.3	
2	2.375	6.500	2.070	0.880	2.750	2.380	3.310	3.620	8	0.750	5.000	3.40
	60.30	165.1	52.60	22.30	69.85	60.45	84.00	91.90		19.00	127.0	
2 1/2	2.875	7.500	2.470	1.000	3.000	2.880	3.940	4.120	8	0.880	5.880	5.17
	73.00	190.5	62.70	25.40	76.20	73.15	100.0	104.6		22.30	149.3	
3	3.500	8.250	3.070	1.120	3.120	3.500	4.620	5.000	8	0.880	6.620	6.93
	88.90	209.5	78.00	28.40	79.25	88.90	117.3	127.0		22.30	168.1	
3 1/2	4.000	9.000	3.550	1.190	3.190	4.000	5.250	5.500	8	0.880	7.250	8.67
	101.6	228.6	90.20	30.20	81.00	101.6	133.3	139.7		22.30	184.1	
4	4.500	10.00	4.030	1.250	3.380	4.500	5.750	6.190	8	0.880	7.880	11.2
	114.3	254.0	102.4	31.70	85.80	114.3	146.0	157.2		22.30	200.1	
5	5.563	11.00	5.050	1.380	3.880	5.560	7.000	7.310	8	0.880	9.250	15.1
	141.3	279.4	128.3	35.00	98.50	141.2	177.8	185.7		22.30	234.9	
6	6.625	12.50	6.070	1.440	3.880	6.630	8.120	8.500	12	0.880	10.62	19.1
	168.3	317.5	154.2	36.50	98.50	168.4	206.2	215.9		22.30	269.7	
8	8.625	15.00	7.980	1.620	4.380	8.630	10.25	10.62	12	1.000	13.00	29.9
	219.1	381.0	202.7	41.10	111.2	219.2	260.3	269.7		25.40	330.2	
10	10.75	17.50	10.02	1.880	4.620	10.75	12.62	12.75	16	1.120	15.25	42.7
	273.0	444.5	254.5	47.70	117.3	273.0	320.5	323.8		28.40	387.3	
12	12.75	20.50	12.00	2.000	5.120	12.75	14.75	15.00	16	1.250	17.75	61.8
	323.8	520.7	304.8	50.80	130.0	323.8	374.6	381.0		31.70	450.8	
14	14.00	23.00		2.120	5.620	14.00	16.75	16.25	20	1.250	20.25	85.8
	355.6	584.2		53.80	142.7	355.6	425.4	412.7		31.70	514.3	
16	16.00	25.50		2.250	5.750	16.00	19.00	18.50	20	1.380	22.50	106
	406.4	647.7		57.15	146.0	406.4	482.6	469.9		35.00	571.5	
18	18.00	28.00		2.380	6.250	18.00	21.00	21.00	24	1.380	24.75	131
	457.2	711.2		60.45	158.7	457.2	533.4	533.4		35.00	628.6	
20	20.00	30.50		2.500	6.380	20.00	23.12	23.00	24	1.380	27.00	158
	508.0	774.7		63.50	162.0	508.0	587.2	584.2		35.00	685.8	
24	24.00	36.00		2.750	6.620	24.00	27.62	27.25	24	1.620	32.00	230
	609.6	914.4		69.85	168.1	609.6	701.5	692.1		41.10	812.8	

Notes

- Dimension B corresponds to the pipe inside diameter. Values quoted assume 40S/Standard wall thickness.
- Weights are based on manufacturer's data and are approximate.
- Flat face flanges may be provided at full thickness, C, or with raised face removed (the latter is nonstandard).



Weld Neck Flanges - ANSI B16.5



Class 400 lb

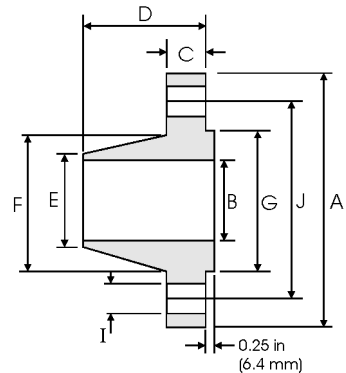
Pipe		Flange Data				Hub Data		Raised Face	Drilling Data			Weight	
Nominal Pipe Size		A	B	C	D	E	F	G	H	I	J		
	Outside Diameter	Overall Diameter	Inside Diameter	Flange Thickness min	Overall Length	Diameter at Weld Bevel	Hub Diameter	Face Diameter	Number of Holes	Bolt Hole Diameter	Diameter of Circle of Holes	kg/ piece	
	in mm	in mm	in mm	in mm	in mm	in mm	in mm	in mm		in mm	in mm	in mm	
1/2	0.840 21.30	3.750 95.30		0.560 14.20	2.060 52.30	0.840 21.30	1.500 38.10	1.380 35.00	4	0.620 15.70	2.620 66.55	0.87	
3/4	1.050 26.70	4.620 117.3		0.620 15.70	2.250 57.15	1.050 26.70	1.880 47.80	1.690 42.90	4	0.750 19.10	3.250 82.60	1.45	
1	1.315 33.40	4.880 124.0		0.690 17.50	2.440 62.00	1.320 33.50	2.120 53.80	2.000 50.80	4	0.750 19.10	3.500 88.90	1.76	
1 1/4	1.660 42.20	5.250 133.4		0.810 20.60	2.620 66.55	1.660 42.20	2.500 63.50	2.500 63.50	4	0.750 19.10	3.880 98.60	2.49	
1 1/2	1.900 48.30	6.120 155.4		0.880 22.40	2.750 69.85	1.900 48.30	2.750 69.85	2.880 73.15	4	0.880 22.40	4.500 114.3	3.49	
2	2.375 60.30	6.500 165.1		1.000 25.40	2.880 73.15	2.380 60.45	3.310 84.10	3.620 91.90	8	0.750 19.10	5.000 127.0	4.36	
2 1/2	2.875 73.00	7.500 190.5		1.120 28.40	3.120 79.25	2.880 73.15	3.940 100.1	4.120 104.6	8	0.880 22.40	5.880 149.4	6.43	
3	3.500 88.90	8.250 209.6		1.250 31.75	3.250 82.60	3.500 88.90	4.620 117.3	5.000 127.0	8	0.880 22.40	6.620 168.1	8.53	
3 1/2	4.000 101.6	9.000 228.6	To be specified by Purchaser	1.380 35.10	3.380 85.90	4.000 101.6	5.250 133.4	5.500 139.7	8	1.000 25.40	7.250 184.2	10.7	
4	4.500 114.3	10.00 254.0		1.380 35.10	3.500 88.90	4.500 114.3	5.750 146.1	6.190 157.2	6.190 157.2	8	1.000 25.40	7.880 200.2	12.8
5	5.563 141.3	11.00 279.4		1.500 38.10	4.000 101.6	5.560 141.2	7.000 177.8	7.310 185.7	7.310 185.7	8	1.000 25.40	9.250 235.0	16.9
6	6.625 168.3	12.50 317.5		1.620 41.10	4.060 103.1	6.630 168.4	8.120 206.2	8.500 215.9	8.500 215.9	12	1.000 25.40	10.62 269.7	22.0
8	8.625 219.1	15.00 381.0		1.880 47.80	4.620 117.3	8.630 219.2	10.25 260.4	10.62 269.7	10.62 269.7	12	1.120 28.40	13.00 330.2	34.7
10	10.75 273.0	17.50 444.5		2.120 53.80	4.880 124.0	10.75 273.0	12.62 320.5	12.75 323.8	12.75 323.8	16	1.250 31.75	15.25 387.4	48.5
12	12.75 323.8	20.50 520.7		2.250 57.15	5.380 136.7	12.75 323.8	14.75 374.7	14.75 374.7	15.00 381.0	16	1.380 35.10	17.75 450.9	69.6
14	14.00 355.6	23.00 584.2		2.380 60.45	5.880 149.4	14.00 355.6	16.75 425.5	16.75 425.5	16.25 412.7	20	1.380 35.10	20.25 514.4	95.5
16	16.00 406.4	25.50 647.7		2.500 63.50	6.000 152.4	16.00 406.4	19.00 482.6	19.00 482.6	18.50 469.9	20	1.500 38.10	22.50 571.5	118
18	18.00 457.2	28.00 711.2		2.620 66.55	6.500 165.1	18.00 457.2	21.00 533.4	21.00 533.4	21.00 533.4	24	1.500 38.10	24.75 628.7	145
20	20.00 508.0	30.50 774.7		2.750 69.85	6.620 168.1	20.00 508.0	23.12 587.2	23.12 587.2	23.00 584.2	24	1.620 41.10	27.00 685.8	173
24	24.00 609.6	36.00 914.4		3.000 76.20	6.880 174.8	24.00 609.6	27.62 701.5	27.62 701.5	27.25 692.1	24	1.880 47.80	32.00 812.8	249

Notes

- Dimension B corresponds to the pipe inside diameter. Values quoted assume 40S/Standard wall thickness.
- Weights are based on manufacturer's data and are approximate.



Weld Neck Flanges - ANSI B16.5



Class 600 lb

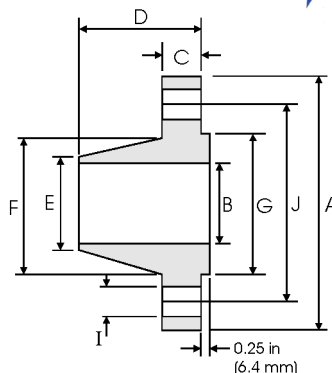
Pipe		Flange Data				Hub Data		Raised Face	Drilling Data			Weight
Nominal Pipe Size		A	B	C	D	E	F	G	H	I	J	
	Outside Diameter	Overall Diameter	Inside Diameter	Flange Thickness min	Overall Length	Diameter at Weld Bevel	Hub Diameter	Face Diameter	Number of Holes	Bolt Hole Diameter	Diameter of Circle of Holes	kg/ piece
	in mm	in mm	in mm	in mm	in mm	in mm	in mm	in mm				
1/2	0.840	3.750	To be specified by Purchaser	0.560	2.060	0.840	1.500	1.380	4	0.620	2.620	0.87
	21.30	95.30		14.20	52.30	21.30	38.10	35.00		15.70	66.55	
3/4	1.050	4.620		0.620	2.250	1.050	1.880	1.690	4	0.750	3.250	1.45
	26.70	117.3		15.70	57.15	26.70	47.80	42.90		19.10	82.60	
1	1.315	4.880		0.690	2.440	1.320	2.120	2.000	4	0.750	3.500	1.76
	33.40	124.0		17.50	62.00	33.50	53.80	50.80		19.10	88.90	
1 1/4	1.660	5.250		0.810	2.620	1.660	2.500	2.500	4	0.750	3.880	2.49
	42.20	133.4		20.60	66.55	42.20	63.50	63.50		19.10	98.60	
1 1/2	1.900	6.120		0.880	2.750	1.900	2.750	2.880	4	0.880	4.500	3.49
	48.30	155.4		22.40	69.85	48.30	69.85	73.15		22.40	114.3	
2	2.375	6.500		1.000	2.880	2.380	3.310	3.620	8	0.750	5.000	4.36
	60.30	165.1		25.40	73.15	60.45	84.10	91.90		19.10	127.0	
2 1/2	2.875	7.500		1.120	3.120	2.880	3.940	4.120	8	0.880	5.880	6.43
	73.00	190.5		28.40	79.25	73.15	100.1	104.6		22.40	149.4	
3	3.500	8.250		1.250	3.250	3.500	4.620	5.000	8	0.880	6.620	8.53
	88.90	209.6		31.75	82.60	88.90	117.3	127.0		22.40	168.1	
3 1/2	4.000	9.000		1.380	3.380	4.000	5.250	5.500	8	1.000	7.250	10.7
	101.6	228.6		35.10	85.90	101.6	133.4	139.7		25.40	184.2	
4	4.500	10.75		1.500	4.000	4.500	6.000	6.190	8	1.000	8.500	17.4
	114.3	273.1		38.10	101.6	114.3	152.4	157.2		25.40	215.9	
5	5.563	13.00	1.750	4.500	5.560	7.440	7.310	8	1.120	10.50	29.2	
	141.3	330.2	44.50	114.3	141.2	189.0	185.7		28.40	266.7		
6	6.625	14.00	1.880	4.620	6.630	8.750	8.500	12	1.120	11.50	34.9	
	168.3	355.6	47.80	117.3	168.4	222.3	215.9		28.40	292.1		
8	8.625	16.50	2.190	5.250	8.630	10.75	10.62	12	1.250	13.75	53.9	
	219.1	419.1	55.60	133.4	219.2	273.1	269.7		31.75	349.3		
10	10.75	20.00	2.500	6.000	10.75	13.50	12.75	16	1.380	17.00	86.5	
	273.0	508.0	63.50	152.4	273.0	342.9	323.8		35.10	431.8		
12	12.75	22.00	2.620	6.120	12.75	15.75	15.00	20	1.380	19.25	103	
	323.8	558.8	66.55	155.4	323.8	400.1	381.0		35.10	489.0		
14	14.00	23.75	2.750	6.500	14.00	17.00	16.25	20	1.500	20.75	122	
	355.6	603.3	69.85	165.1	355.6	431.8	412.7		38.10	527.1		
16	16.00	27.00	3.000	7.000	16.00	19.50	18.50	20	1.620	23.75	170	
	406.4	685.8	76.20	177.8	406.4	495.3	469.9		41.10	603.3		
18	18.00	29.25	3.250	7.250	18.00	21.50	21.00	20	1.750	25.75	204	
	457.2	743.0	82.60	184.2	457.2	546.1	533.4		44.50	654.1		
20	20.00	32.00	3.500	7.500	20.00	24.00	23.00	24	1.750	28.50	254	
	508.0	812.8	88.90	190.5	508.0	609.6	584.2		44.50	723.9		
24	24.00	37.00	4.000	8.000	24.00	28.25	27.25	24	2.000	33.00	358	
	609.6	939.8	101.6	203.2	609.6	717.6	692.1		50.80	838.2		

Notes



- Dimension B corresponds to the pipe inside diameter. Values quoted assume 40S/Standard wall thickness.
- Weights are based on manufacturer's data and are approximate.



Weld Neck Flanges - ANSI B16.5



Class 900 lb

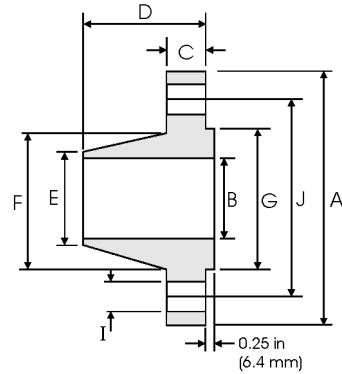
Pipe		Flange Data				Hub Data			Raised Face	Drilling Data			Weight
Nominal Pipe Size		A	B	C	D	E	F	G	H	I	J		
	Outside Diameter	Overall Diameter	Inside Diameter	Flange Thickness min	Overall Length	Diameter at Weld Bevel	Hub Diameter	Face Diameter	Number of Holes	Bolt Hole Diameter	Diameter of Circle of Holes	kg/ piece	
	in mm	in mm	in mm	in mm	in mm	in mm	in mm	in mm		in mm	in mm		
1/2	0.840	4.750	To be specified by Purchaser	0.880	2.380	0.840	1.500	1.380	4	0.880	3.250	1.87	
	21.30	120.6		22.30	60.45	21.30	38.10	35.00		22.30	82.50		
3/4	1.050	5.120		1.000	2.750	1.050	1.750	1.690	4	0.880	3.500	2.56	
	26.70	130.0		25.40	69.85	26.70	44.00	42.90		22.30	88.90		
1	1.315	5.880		1.120	2.880	1.320	2.060	2.000	4	1.000	4.000	3.74	
	33.40	149.3		28.40	73.15	33.50	52.30	50.80		25.40	101.6		
1 1/4	1.660	6.250		1.120	2.880	1.660	2.500	2.500	4	1.000	4.380	4.33	
	42.20	158.7		28.40	73.15	42.20	63.50	63.50		25.40	111.2		
1 1/2	1.900	7.000		1.250	3.250	1.900	2.750	2.880	4	1.120	4.880	5.94	
	48.30	177.8		31.70	82.50	48.30	69.85	73.15		28.40	123.9		
2	2.375	8.500		1.500	4.000	2.380	4.120	3.620	8	1.000	6.500	10.8	
	60.30	215.9		38.10	101.6	60.45	104.6	91.90		25.40	165.1		
2 1/2	2.875	9.620		1.620	4.120	2.880	4.880	4.120	8	1.120	7.500	15.0	
	73.00	244.3		41.10	104.6	73.15	123.9	104.6		28.40	190.5		
3	3.500	9.500		1.500	4.000	3.500	5.000	5.000	8	1.000	7.500	13.7	
	88.90	241.3		38.10	101.6	88.90	127.0	127.0		25.40	190.5		
4	4.500	11.50		1.750	4.500	4.500	6.250	6.190	8	1.250	9.250	22.5	
	114.3	292.1		44.40	114.3	114.3	158.7	157.2		31.70	234.9		
5	5.563	13.75		2.000	5.000	5.560	7.500	7.310	8	1.380	11.00	37.4	
	141.3	349.2		50.80	127.0	141.2	190.5	185.7		35.00	279.4		
6	6.625	15.00	2.190	5.500	6.630	9.250	8.500	12	1.250	12.50	47.7		
	168.3	381.0	55.60	139.7	168.4	234.9	215.9		31.70	317.5			
8	8.625	18.50	2.500	6.380	8.630	11.75	10.62	12	1.500	15.50	81.3		
	219.1	469.9	63.50	162.0	219.2	298.4	269.7		38.10	393.7			
10	10.75	21.50	2.750	7.250	10.75	14.50	12.75	16	1.500	18.50	119		
	273.0	546.1	69.85	184.1	273.0	368.3	323.8		38.10	469.9			
12	12.75	24.00	3.120	7.880	12.75	16.50	15.00	20	1.500	21.00	157		
	323.8	609.6	79.25	200.1	323.8	419.1	381.0		38.10	533.4			
14	14.00	25.25	3.380	8.380	14.00	17.75	16.25	20	1.620	22.00	180		
	355.6	641.3	85.80	212.8	355.6	450.8	412.7		41.10	558.8			
16	16.00	27.75	3.500	8.500	16.00	20.00	18.50	20	1.750	24.25	217		
	406.4	704.8	88.90	215.9	406.4	508.0	469.9		44.40	615.9			
18	18.00	31.00	4.000	9.000	18.00	22.25	21.00	20	2.000	27.00	292		
	457.2	787.4	101.6	228.6	457.2	565.1	533.4		50.80	685.8			
20	20.00	33.75	4.250	9.750	20.00	24.50	23.00	20	2.120	29.50	362		
	508.0	857.2	107.9	247.6	508.0	622.3	584.2		53.80	749.3			
24	24.00	41.00	5.500	11.50	24.00	29.50	27.25	20	2.620	35.50	665		
	609.6	1041.4	139.7	292.1	609.6	749.3	692.1		66.55	901.7			

Notes



- Dimension B corresponds to the pipe inside diameter. Values quoted assume 40S/Standard wall thickness.
- Weights are based on manufacturer's data and are approximate.



Weld Neck Flanges - ANSI B16.5



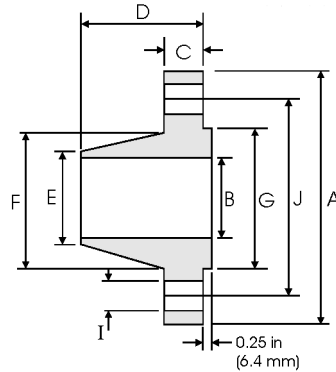
Class 1500 lb

Pipe		Flange Data				Hub Data		Raised Face	Drilling Data			Weight
Nominal Pipe Size		A	B	C	D	E	F	G	H	I	J	
	Outside Diameter	Overall Diameter	Inside Diameter	Flange Thickness min	Overall Length	Diameter at Weld Bevel	Hub Diameter	Face Diameter	Number of Holes	Bolt Hole Diameter	Diameter of Circle of Holes	kg/ piece
	in mm	in mm	in mm	in mm	in mm	in mm	in mm	in mm			in mm	in mm
1/2	0.840	4.750	To be specified by Purchaser	0.880	2.380	0.840	1.500	1.380	4	0.880	3.250	1.87
	21.30	120.6		22.30	60.45	21.30	38.10	35.00		22.30	82.50	
3/4	1.050	5.120		1.000	2.750	1.050	1.750	1.690	4	0.880	3.500	2.56
	26.70	130.0		25.40	69.85	26.70	44.00	42.90		22.30	88.90	
1	1.315	5.880		1.120	2.880	1.320	2.060	2.000	4	1.000	4.000	3.74
	33.40	149.3		28.40	73.15	33.50	52.30	50.80		25.40	101.6	
1 1/4	1.660	6.250		1.120	2.880	1.660	2.500	2.500	4	1.000	4.380	4.33
	42.20	158.7		28.40	73.15	42.20	63.50	63.50		25.40	111.2	
1 1/2	1.900	7.000		1.250	3.250	1.900	2.750	2.880	4	1.120	4.880	5.94
	48.30	177.8		31.70	82.50	48.30	69.85	73.15		28.40	123.9	
2	2.375	8.500		1.500	4.000	2.380	4.120	3.620	8	1.000	6.500	10.8
	60.30	215.9		38.10	101.6	60.45	104.6	91.90		25.40	165.1	
2 1/2	2.875	9.620		1.620	4.120	2.880	4.880	4.120	8	1.120	7.500	15.0
	73.00	244.3		41.10	104.6	73.15	123.9	104.6		28.40	190.5	
3	3.500	10.50	1.880	4.620	3.500	5.250	5.000	8	1.250	8.000	19.9	
	88.90	266.7	47.70	177.3	88.90	133.3	127.0		31.70	203.2		
4	4.500	12.25	2.120	4.880	4.500	6.380	6.190	8	1.380	9.500	29.9	
	114.3	311.1	53.80	123.9	114.3	162.0	157.2		35.00	241.3		
5	5.563	14.75	2.880	6.120	5.560	7.750	7.310	8	1.620	11.50	55.4	
	141.3	374.6	73.15	155.4	141.2	196.8	185.7		41.10	292.1		
6	6.625	15.50	3.250	6.750	6.630	9.000	8.500	12	1.500	12.50	68.4	
	168.3	393.7	82.50	171.4	168.4	228.6	215.9		38.10	317.5		
8	8.625	19.00	3.620	8.380	8.630	11.50	10.62	12	1.750	15.50	117	
	219.1	482.6	91.90	212.8	219.2	292.1	269.7		44.40	393.7		
10	10.75	23.00	4.250	10.00	10.75	14.50	12.75	12	2.000	19.00	194	
	273.0	584.2	107.9	254.0	273.0	368.3	323.8		50.80	482.6		
12	12.75	26.50	4.880	11.12	12.75	17.75	15.00	16	2.120	22.50	288	
	323.8	673.1	123.9	282.4	323.8	450.8	381.0		53.80	571.5		
14	14.00	29.50	5.250	11.75	14.00	19.50	16.25	16	2.380	25.00	380	
	355.6	749.3	133.3	298.4	355.6	495.3	412.7		60.45	635.0		
16	16.00	32.50	5.750	12.25	16.00	21.75	18.50	16	2.620	27.75	485	
	406.4	825.5	146.0	311.1	406.4	552.4	469.9		66.55	704.8		
18	18.00	36.00	6.380	12.88	18.00	23.50	21.00	16	2.880	30.50	644	
	457.2	914.4	162.0	327.1	457.2	596.9	533.4		73.15	774.7		
20	20.00	38.75	7.000	14.00	20.00	25.25	23.00	16	3.120	32.75	775	
	508.0	984.2	177.8	355.6	508.0	641.3	584.2		79.25	831.8		
24	24.00	46.00	8.000	16.00	24.00	30.00	27.25	16	3.620	39.00	1232	
	609.6	1168.4	203.2	406.4	609.6	762.0	692.1		91.90	990.6		

Notes

- Dimension B corresponds to the pipe inside diameter. Values quoted assume 40S/Standard wall thickness.
- Weights are based on manufacturer's data and are approximate.

Weld Neck Flanges - ANSI B16.5



Class 2500 lb

Nominal Pipe Size	Pipe		Flange Data				Hub Data		Raised Face	Drilling Data			Weight
		A	B	C	D	E	F	G	H	I	J		
	Outside Diameter	Overall Diameter	Inside Diameter	Flange Thickness min	Overall Length	Diameter at Weld Bevel	Hub Diameter	Face Diameter	Number of Holes	Bolt Hole Diameter	Diameter of Circle of Holes	kg/ piece	
	in mm	in mm	in mm	in mm	in mm	in mm	in mm	in mm		in mm	in mm		
1/2	0.840 21.30	5.250 133.4	To be specified by Purchaser	1.190 30.20	2.880 73.15	0.840 21.30	1.690 42.90	1.380 35.00	4	0.880 22.40	3.500 88.90	3.12	
3/4	1.050 26.70	5.500 139.7		1.250 31.75	3.120 79.25	1.050 26.70	2.000 50.80	1.690 42.90	4	0.880 22.40	3.750 95.30	3.70	
1	1.315 33.40	6.250 158.8		1.380 35.10	3.500 88.90	1.320 33.50	2.250 57.15	2.000 50.80	4	1.000 25.40	4.250 108.0	5.24	
1 1/4	1.660 42.20	7.250 184.2		1.500 38.10	3.750 95.30	1.660 42.20	2.880 73.15	2.500 63.50	4	1.120 28.40	5.120 130.0	7.74	
1 1/2	1.900 48.30	8.000 203.2		1.750 44.50	4.380 111.3	1.900 48.30	3.120 79.25	2.880 73.15	4	1.250 31.75	5.750 146.1	10.9	
2	2.375 60.30	9.250 235.0		2.000 50.80	5.000 127.0	2.380 60.45	3.750 95.30	3.620 91.90	8	1.120 28.40	6.750 171.5	16.2	
2 1/2	2.875 73.00	10.50 266.7		2.250 57.15	5.620 142.7	2.880 73.15	4.500 114.3	4.120 104.6	8	1.250 31.75	7.750 196.9	23.7	
3	3.500 88.90	12.00 304.8		2.620 66.55	6.620 168.1	3.500 88.90	5.250 133.4	5.000 127.0	8	1.380 35.10	9.000 228.6	36.2	
4	4.500 114.3	14.00 355.6		3.000 76.20	7.500 190.5	4.500 114.3	6.500 165.1	6.190 157.2	8	1.620 41.10	10.75 273.1	55.3	
5	5.563 141.3	16.50 419.1		3.620 91.90	9.000 228.6	5.560 141.2	8.000 203.2	7.310 185.7	8	1.880 47.80	12.75 323.9	92.5	
6	6.625 168.3	19.00 482.6		4.250 108.0	10.75 273.1	6.630 168.4	9.250 235.0	8.500 215.9	8	2.120 53.80	14.50 368.3	143	
8	8.625 219.1	21.75 552.5		5.000 127.0	12.50 317.5	8.630 219.2	12.00 304.8	10.62 269.7	12	2.120 53.80	17.25 438.2	215	
10	10.75 273.0	26.50 673.1		6.500 165.1	16.50 419.1	10.75 273.0	14.75 374.7	12.75 323.8	12	2.620 66.55	21.25 539.8	406	
12	12.75 323.8	30.00 762.0		7.250 184.2	18.25 463.6	12.75 323.8	17.38 441.5	15.00 381.0	12	2.880 73.15	24.38 619.3	572	

Notes

- Dimension B corresponds to the pipe inside diameter. Values quoted assume 40S/Standard wall thickness.
- Weights are based on manufacturer's data and are approximate.