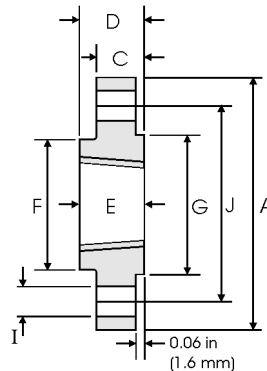




## Threaded Flanges - ANSI B16.5



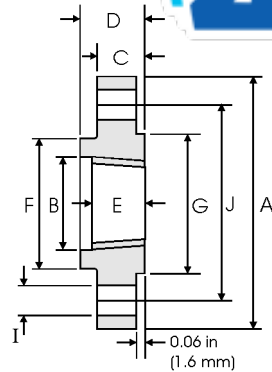
### Class 150 lb

Pipe		Flange Data				Hub	Raised Face	Drilling Data			Weight
Nominal Pipe Size		A	C	D	E	F	G	H	I	J	
	Outside Diameter	Overall Diameter	Flange Thickness min	Overall Length	Threaded length min	Hub Diameter	Face Diameter	Number of Holes	Bolt Hole Diameter	Diameter of Circle of Holes	kg/ piece
	in mm	in mm	in mm	in mm	in mm	in mm	in mm				
1/2	0.840	3.500	0.440	0.620	0.620	1.190	1.380	4	0.620	2.380	0.39
	21.30	88.90	11.20	15.70	15.70	30.20	35.10				
3/4	1.050	3.880	0.500	0.620	0.620	1.500	1.690	4	0.620	2.750	0.56
	26.70	98.60	12.70	15.70	15.70	38.10	42.90				
1	1.315	4.250	0.560	0.690	0.690	1.940	2.000	4	0.620	3.120	0.78
	33.40	108.0	14.20	17.50	17.50	49.30	50.80				
1 1/4	1.660	4.620	0.620	0.810	0.810	2.310	2.500	4	0.620	3.500	1.03
	42.20	117.3	15.70	20.60	20.60	58.70	63.50				
1 1/2	1.900	5.000	0.690	0.880	0.880	2.560	2.880	4	0.620	3.880	1.32
	48.30	127.0	17.50	22.40	22.30	65.00	73.15				
2	2.375	6.000	0.750	1.000	1.000	3.060	3.620	4	0.750	4.750	2.06
	60.30	152.4	19.10	25.40	25.40	77.70	91.90				
2 1/2	2.875	7.000	0.880	1.120	1.120	3.560	4.120	4	0.750	5.500	3.28
	73.00	177.8	22.40	28.40	28.40	90.40	104.6				
3	3.500	7.500	0.940	1.190	1.190	4.250	5.000	4	0.750	6.000	3.85
	88.90	190.5	23.90	30.20	30.20	108.0	127.0				
3 1/2	4.000	8.500	0.940	1.250	1.250	4.810	5.500	8	0.750	7.000	4.81
	101.6	215.9	23.90	31.75	31.75	122.2	139.7				
4	4.500	9.000	0.940	1.310	1.310	5.310	6.190	8	0.750	7.500	5.30
	114.3	228.6	23.90	33.30	33.30	134.9	157.2				
5	5.563	10.00	0.940	1.440	1.440	6.440	7.310	8	0.880	8.500	6.07
	141.3	254.0	23.90	36.60	36.60	163.6	185.7				
6	6.625	11.00	1.000	1.560	1.560	7.560	8.500	8	0.880	9.500	7.45
	168.3	279.4	25.40	39.60	39.60	192.0	215.9				
8	8.625	13.50	1.120	1.750	1.750	9.690	10.62	8	0.880	11.75	12.1
	219.1	342.9	28.40	44.50	44.50	246.1	269.7				
10	10.75	16.00	1.190	1.940	1.940	12.00	12.75	12	1.000	14.25	16.5
	273.0	406.4	30.20	49.30	49.30	304.8	323.9				
12	12.75	19.00	1.250	2.190	2.190	14.38	15.00	12	1.000	17.00	26.2
	323.8	482.6	31.75	55.60	55.60	365.3	381.0				
14	14.00	21.00	1.380	2.250	2.250	15.75	16.25	12	1.120	18.75	34.6
	355.6	533.4	35.10	57.15	57.15	400.1	412.7				
16	16.00	23.50	1.440	2.500	2.500	18.00	18.50	16	1.120	21.25	44.8
	406.4	596.9	36.60	63.50	63.50	457.2	469.9				
18	18.00	25.00	1.560	2.690	2.690	19.88	21.00	16	1.250	22.75	48.9
	457.2	635.0	39.60	68.30	68.30	505.0	533.4				
20	20.00	27.50	1.690	2.880	2.880	22.00	23.00	20	1.250	25.00	61.9
	508.0	698.5	42.90	73.15	73.15	558.8	584.2				
24	24.00	32.00	1.880	3.250	3.250	26.12	27.25	20	1.380	29.50	86.9
	609.6	812.8	47.80	82.60	82.60	663.4	692.2				

#### Notes

- The thread conforms to ASME B1.20.1 NTP threads as described in Section 10. (The only exceptions are small male and female plain face threaded flanges which use NPSL recout threads.)
- Class 150 threaded flanges are made without a counterbore. Threads are chamfered to the major diameter (approx.) at an angle of 45° (approx.) at the back of the flange.
- Weights are based on manufacturer's data and are approximate.

## Threaded Flanges - ANSI B16.5



### Class 300 lb

Pipe		Flange Data					Hub	Raised Face	Drilling Data			Weight
Nominal Pipe Size		A	B	C	D	E	F	G	H	I	J	
	Outside Diameter	Overall Diameter	Counter-bore min	Flange Thickness min	Overall Length	Threaded length min	Hub Diameter	Face Diameter	Number of Holes	Bolt Hole Diameter	Diameter of Circle of Holes	kg/ piece
	in mm	in mm	in mm	in mm	in mm	in mm	in mm	in mm		in mm	in mm	
1/2	0.840	3.750	0.930	0.560	0.880	0.620	1.500	1.380	4	0.620	2.620	0.64
	21.30	95.20	23.60	14.20	22.30	15.70	38.10	35.00		15.70	66.55	
3/4	1.050	4.620	1.140	0.620	1.000	0.620	1.880	1.690	4	0.750	3.250	1.12
	26.70	117.3	29.00	15.70	25.40	15.70	47.70	42.90		19.00	82.50	
1	1.315	4.880	1.410	0.690	1.060	0.690	2.120	2.000	4	0.750	3.500	1.36
	33.40	123.9	35.80	17.50	26.90	17.50	53.80	50.80		19.00	88.90	
1 1/4	1.660	5.250	1.750	0.750	1.060	0.810	2.500	2.500	4	0.750	3.880	1.68
	42.20	133.3	44.40	19.00	26.90	20.60	63.50	63.50		19.00	98.50	
1 1/2	1.900	6.120	1.980	0.810	1.190	0.880	2.750	2.880	4	0.880	4.500	2.49
	48.30	155.4	50.50	20.60	30.20	22.30	69.85	73.15		22.30	114.3	
2	2.375	6.500	2.500	0.880	1.310	1.120	3.310	3.620	8	0.750	5.000	2.87
	60.30	165.1	63.50	22.30	33.20	28.40	84.00	91.90		19.00	127.0	
2 1/2	2.875	7.500	3.000	1.000	1.500	1.250	3.940	4.120	8	0.880	5.880	4.32
	73.00	190.5	76.20	25.40	38.10	31.70	100.0	104.6		22.30	149.3	
3	3.500	8.250	3.630	1.120	1.690	1.250	4.620	5.000	8	0.880	6.620	5.85
	88.90	209.5	92.20	28.40	42.90	31.70	117.3	127.0		22.30	168.1	
3 1/2	4.000	9.000	4.130	1.190	1.750	1.440	5.250	5.500	8	0.880	7.250	7.34
	101.6	228.6	104.9	30.20	44.40	36.50	133.3	139.7		22.30	184.1	
4	4.500	10.00	4.630	1.250	1.880	1.440	5.750	6.190	8	0.880	7.880	9.61
	114.3	254.0	117.6	31.70	47.70	36.50	146.0	157.2		22.30	200.1	
5	5.563	11.00	5.690	1.380	2.000	1.690	7.000	7.310	8	0.880	9.250	12.3
	141.3	279.4	144.5	35.00	50.80	42.90	177.8	185.7		22.30	234.9	
6	6.625	12.50	6.750	1.440	2.060	1.810	8.120	8.500	12	0.880	10.62	15.6
	168.3	317.5	171.4	36.50	52.30	45.90	206.2	215.9		22.30	269.7	
8	8.625	15.00	8.750	1.620	2.440	2.000	10.25	10.62	12	1.000	13.00	24.2
	219.1	381.0	222.2	41.10	61.90	50.80	260.3	269.7		25.40	330.2	
10	10.75	17.50	10.88	1.880	2.620	2.190	12.62	12.75	16	1.120	15.25	34.1
	273.0	444.5	276.3	47.70	66.55	55.60	320.5	323.9		28.40	387.3	
12	12.75	20.50	12.94	2.000	2.880	2.380	14.75	15.00	16	1.250	17.75	49.8
	323.8	520.7	328.7	50.80	73.15	60.45	374.6	381.0		31.70	450.8	
14	14.00	23.00	14.19	2.120	3.000	2.500	16.75	16.25	20	1.250	20.25	69.9
	355.6	584.2	360.4	53.80	76.20	63.50	425.4	412.7		31.70	514.3	
16	16.00	25.50	16.19	2.250	3.250	2.690	19.00	18.50	20	1.380	22.50	88.1
	406.4	647.7	411.2	57.15	82.50	68.30	482.6	469.9		35.00	571.5	
18	18.00	28.00	18.19	2.380	3.500	2.750	21.00	21.00	24	1.380	24.75	109
	457.2	711.2	462.0	60.45	88.90	69.85	533.4	533.4		35.00	628.6	
20	20.00	30.50	20.19	2.500	3.750	2.880	23.12	23.00	24	1.380	27.00	134
	508.0	774.7	512.8	63.50	95.2	73.15	587.2	584.2		35.00	685.8	
24	24.00	36.00	24.19	2.750	4.190	3.250	27.62	27.25	24	1.620	32.00	201
	609.6	914.4	614.4	69.85	106.4	82.50	701.5	692.2		41.10	812.8	

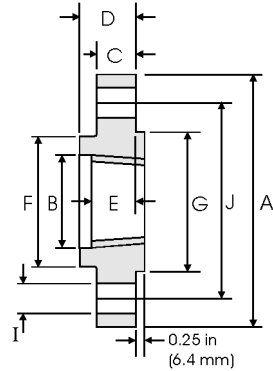
#### Notes

- The thread conforms to ASME B1.20.1 NTP threads as described in Section 10. (The only exceptions are small male and female plain face threaded flanges which use NPSL locknut threads.)
- Class 300 and higher threaded flanges are counter-bored. Threads are chamfered to the counter-bore at an angle of 45° (approx).
- Weights are based on manufacturer's data and are approximate.

# ZIZI ENGINEERING CO LTD



## Threaded Flanges - ANSI B16.5



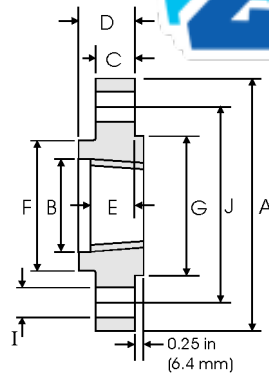
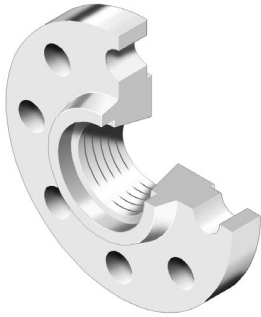
### Class 400 lb

Pipe		Flange Data					Hub	Raised Face	Drilling Data			Weight
Nominal Pipe Size		A	B	C	D	E	F	G	H	I	J	
	Outside Diameter	Overall Diameter	Counter-bore min	Flange Thickness min	Overall Length	Threaded length min	Hub Diameter	Face Diameter	Number of Holes	Bolt Hole Diameter	Diameter of Circle of Holes	kg/ piece
	in mm	in mm	in mm	in mm	in mm	in mm	in mm	in mm		in mm	in mm	
1/2	0.840 21.30	3.750 95.30	0.930 23.60	0.560 14.20	0.930 22.40	0.620 15.70	1.500 38.10	1.380 35.10	4	0.620 15.70	2.620 66.55	0.74
3/4	1.050 26.70	4.620 117.3	1.140 29.00	0.620 15.70	1.000 25.40	0.620 15.70	1.880 47.80	1.690 42.90	4	0.750 19.10	3.250 82.60	1.27
1	1.315 33.40	4.880 124.0	1.410 35.80	0.690 17.50	1.060 26.90	0.690 17.50	2.120 53.80	2.000 50.80	4	0.750 19.10	3.500 88.90	1.52
1 1/4	1.660 42.20	5.250 133.4	1.750 44.50	0.810 20.60	1.120 28.40	0.810 20.60	2.500 63.50	2.500 63.50	4	0.750 19.10	3.880 98.60	2.03
1 1/2	1.900 48.30	6.120 155.4	1.990 50.50	0.880 22.40	1.250 31.75	0.880 22.40	2.750 69.85	2.880 73.15	4	0.880 22.40	4.500 114.3	2.96
2	2.375 60.30	6.500 165.1	2.500 63.50	1.000 25.40	1.440 36.60	1.120 28.40	3.310 84.10	3.620 91.90	8	0.750 19.10	5.000 127.0	3.62
2 1/2	2.875 73.00	7.500 190.5	3.000 76.20	1.120 28.40	1.620 41.10	1.250 31.75	3.940 100.1	4.120 104.6	8	0.880 22.40	5.880 149.4	5.28
3	3.500 88.90	8.250 209.6	3.630 92.20	1.250 31.75	1.810 46.00	1.380 35.10	4.620 117.3	5.000 127.0	8	0.880 22.40	6.620 168.1	7.00
3 1/2	4.000 101.6	9.000 228.6	4.130 104.9	1.380 35.10	1.940 49.30	1.560 39.60	5.250 133.4	5.500 139.7	8	1.000 25.40	7.250 184.2	8.84
4	4.500 114.3	10.00 254.0	4.630 117.6	1.380 35.10	2.000 50.80	1.440 36.60	5.750 146.1	6.190 157.2	8	1.000 25.40	7.880 200.2	11.1
5	5.563 141.3	11.00 279.4	5.690 144.5	1.500 38.10	2.120 53.80	1.690 42.90	7.000 177.8	7.310 185.7	8	1.000 25.40	9.250 235.0	13.9
6	6.625 168.3	12.50 317.5	6.750 171.5	1.620 41.10	2.250 57.15	1.810 46.00	8.120 206.2	8.500 215.9	12	1.000 25.40	10.62 269.7	18.3
8	8.625 219.1	15.00 381.0	8.750 222.3	1.880 47.80	2.690 68.30	2.000 50.80	10.25 260.4	10.62 269.7	12	1.120 28.40	13.00 330.2	28.6
10	10.75 273.0	17.50 444.5	10.88 276.4	2.120 53.80	2.880 73.15	2.190 55.60	12.62 320.5	12.75 323.9	16	1.250 31.75	15.25 387.4	39.2
12	12.75 323.8	20.50 520.7	12.94 328.7	2.250 57.15	3.120 79.25	2.380 60.45	14.75 374.7	15.00 381.0	16	1.380 35.10	17.75 450.9	57.0
14	14.00 355.6	23.00 584.2	14.19 360.4	2.380 60.45	3.310 84.10	2.500 63.50	16.75 425.5	16.25 412.8	20	1.380 35.10	20.25 514.4	79.1
16	16.00 406.4	25.50 647.7	16.19 411.2	2.500 63.50	3.690 93.70	2.690 68.30	19.00 482.6	18.50 469.9	20	1.500 38.10	22.50 571.5	101
18	18.00 457.2	28.00 711.2	18.19 462.0	2.620 66.55	3.880 98.60	2.750 69.85	21.00 533.4	21.00 533.4	24	1.500 38.10	24.75 628.7	123
20	20.00 508.0	30.50 774.7	20.19 512.8	2.750 69.85	4.000 101.6	2.880 73.15	23.12 587.2	23.00 584.2	24	1.620 41.10	27.00 685.8	146
24	24.00 609.6	36.00 914.4	24.19 614.4	3.000 76.20	4.500 114.3	3.250 82.60	27.62 701.5	27.25 692.2	24	1.880 47.80	32.00 812.8	219

#### Notes

- The thread conforms to ASME B1.20.1 NTP threads as described in Section 10. (The only exceptions are small male and female plain face threaded flanges which use NPSL locknut threads.)
- Class 300 and higher threaded flanges are counter-bored. Threads are chamfered to the counterbore at an angle of 45° (approx).
- Weights are based on manufacturer's data and are approximate.

## Threaded Flanges - ANSI B16.5



### Class 600 lb

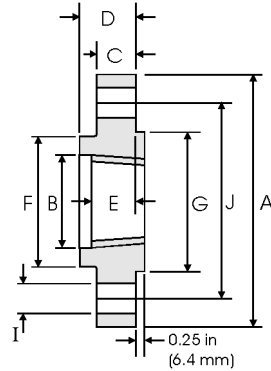
Pipe		Flange Data					Hub	Raised Face	Drilling Data			Weight
Nominal Pipe Size		A	B	C	D	E	F	G	H	I	J	
	Outside Diameter	Overall Diameter	Counter-bore min	Flange Thickness min	Overall Length	Threaded length min	Hub Diameter	Face Diameter	Number of Holes	Bolt Hole Diameter	Diameter of Circle of Holes	kg/ piece
	in mm	in mm	in mm	in mm	in mm	in mm	in mm	in mm				
1/2	0.840	3.750	0.930	0.560	0.880	0.620	1.500	1.380	4	0.620	2.620	0.74
	21.30	95.20	23.60	14.20	22.40	15.70	38.10	35.10				
3/4	1.050	4.620	1.140	0.620	1.000	0.620	1.880	1.690	4	0.750	3.250	1.27
	26.70	117.3	29.00	15.70	25.40	15.70	47.80	42.90				
1	1.315	4.880	1.410	0.690	1.060	0.690	2.120	2.000	4	0.750	3.500	1.52
	33.40	124.0	35.80	17.50	26.90	17.50	53.80	50.80				
1 1/4	1.660	5.250	1.750	0.810	1.120	0.810	2.500	2.500	4	0.750	3.880	2.03
	42.20	133.4	44.50	20.60	28.40	20.60	63.50	63.50				
1 1/2	1.900	6.120	1.990	0.880	1.250	0.880	2.750	2.880	4	0.880	4.500	2.96
	48.30	155.4	50.50	22.40	31.75	22.40	69.85	73.15				
2	2.375	6.500	2.500	1.000	1.440	1.120	3.310	3.620	8	0.750	5.000	3.62
	60.30	165.1	63.50	25.40	36.60	28.40	84.10	91.90				
2 1/2	2.875	7.500	3.000	1.120	1.620	1.250	3.940	4.120	8	0.880	5.880	5.28
	73.00	190.5	76.20	28.40	41.10	31.75	100.1	104.6				
3	3.500	8.250	3.630	1.250	1.810	1.380	4.620	5.000	8	0.880	6.620	7.00
	88.90	209.6	92.20	31.75	46.00	35.10	117.3	127.0				
3 1/2	4.000	9.000	4.130	1.380	1.940	1.560	5.250	5.500	8	1.000	7.250	8.84
	101.6	228.6	104.9	35.10	49.30	39.60	133.4	139.7				
4	4.500	10.75	4.630	1.500	2.120	1.620	6.000	6.190	8	1.000	8.500	14.5
	114.3	273.1	117.6	38.10	53.80	41.10	152.4	157.2				
5	5.563	13.00	5.690	1.750	2.380	1.880	7.440	7.310	8	1.120	10.50	24.4
	141.3	330.2	144.5	44.50	60.45	47.80	189.0	185.7				
6	6.625	14.00	6.750	1.880	2.620	2.000	8.750	8.500	12	1.120	11.50	28.7
	168.3	355.6	171.5	47.80	66.55	50.80	222.3	215.9				
8	8.625	16.50	8.750	2.190	3.000	2.250	10.75	10.62	12	1.250	13.75	43.4
	219.1	419.1	222.3	55.60	76.20	57.15	273.1	269.7				
10	10.75	20.00	10.88	2.500	3.380	2.560	13.50	12.75	16	1.380	17.00	70.3
	273.0	508.0	276.4	63.50	85.90	65.00	342.9	323.9				
12	12.75	22.00	12.94	2.620	3.620	2.750	15.75	15.00	20	1.380	19.25	84.2
	323.8	558.8	328.7	66.55	91.90	69.85	400.1	381.0				
14	14.00	23.75	14.19	2.750	3.690	2.880	17.00	16.25	20	1.500	20.75	98.7
	355.6	603.3	360.4	69.85	93.70	73.15	431.8	412.8				
16	16.00	27.00	16.19	3.000	4.190	3.060	19.50	18.50	20	1.620	23.75	142
	406.4	685.8	411.2	76.20	106.4	77.70	495.3	469.9				
18	18.00	29.25	18.19	3.250	4.620	3.120	21.50	21.00	20	1.750	25.75	173
	457.2	743.0	462.0	82.60	117.3	79.25	546.1	533.4				
20	20.00	32.00	20.19	3.500	5.000	3.250	24.00	23.00	24	1.750	28.50	220
	508.0	812.8	512.8	88.90	127.0	82.60	609.6	584.2				
24	24.00	37.00	24.19	4.000	5.500	3.620	28.25	27.25	24	2.000	33.00	312
	609.6	939.8	614.4	101.6	139.7	91.90	717.6	692.2				

#### Notes

- The thread conforms to ASME B1.20.1 NTP threads as described in Section 10. (The only exceptions are small male and female plain face threaded flanges which use NPSL locknut threads.)
- Class 300 and higher threaded flanges are counter-bored. Threads are chamfered to the counterbore at an angle of 45° (approx).
- Weights are based on manufacturer's data and are approximate.



## Threaded Flanges - ANSI B16.5



### Class 900 lb

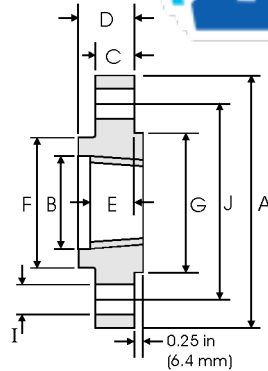
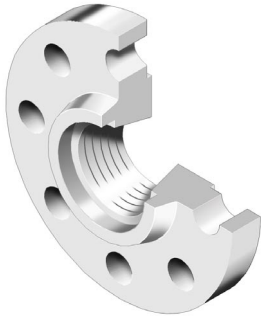
Pipe	Flange Data						Hub	Raised Face	Drilling Data			Weight
Nominal Pipe Size	A	B	C	D	E	F	G	H	I	J	kg/ piece	
	Outside Diameter	Diameter Overall	Counter-bore min	Flange Thickness min	Overall Length	Threaded length min	Hub Diameter	Face Diameter	Number of Holes	Bolt Hole Diameter		Diameter of Circle of Holes
	in mm	in mm	in mm	in mm	in mm	in mm	in mm	in mm				
1/2	0.840 21.30	4.750 120.6	0.930 23.60	0.880 22.30	1.250 31.70	0.880 22.30	1.500 38.10	1.380 35.10	4	0.880 22.30	3.250 82.50	1.74
3/4	1.050 26.70	5.120 130.0	1.140 29.00	1.000 25.40	1.380 35.00	1.000 25.40	1.750 44.40	1.690 42.90	4	0.880 22.30	3.500 88.90	2.34
1	1.315 33.40	5.880 149.3	1.410 35.80	1.120 28.40	1.620 41.10	1.120 28.40	2.060 52.30	2.000 50.80	4	1.000 25.40	4.000 101.6	3.44
1 1/4	1.660 42.20	6.250 158.7	1.750 44.40	1.120 28.40	1.620 41.10	1.120 30.20	2.500 63.50	2.500 63.50	4	1.000 25.40	4.380 111.2	3.91
1 1/2	1.900 48.30	7.000 177.8	1.990 50.50	1.250 31.70	1.750 44.50	1.250 31.70	2.750 69.85	2.880 73.15	4	1.120 28.40	4.880 123.9	5.36
2	2.375 60.30	8.500 215.9	2.500 63.50	1.500 38.10	2.250 57.15	1.500 38.10	4.120 104.6	3.620 91.90	8	1.000 25.40	6.500 165.1	9.85
2 1/2	2.875 73.00	9.620 244.3	3.000 76.20	1.620 41.10	2.500 63.50	1.880 47.70	4.880 123.9	4.120 104.6	8	1.120 28.40	7.500 190.5	13.7
3	3.500 88.90	9.500 241.3	3.630 92.20	1.500 38.10	2.120 53.80	1.620 41.10	5.000 127.0	5.000 127.0	8	1.000 25.40	7.500 190.5	11.6
4	4.500 114.3	11.50 292.1	4.630 117.6	1.750 44.40	2.750 69.85	1.880 47.80	6.250 158.7	6.190 157.2	8	1.250 31.70	9.250 234.9	19.7
5	5.563 141.3	13.75 349.2	5.690 144.5	2.000 50.80	3.120 79.25	2.120 53.80	7.500 190.5	7.310 185.7	8	1.380 35.00	11.00 279.4	31.9
6	6.625 168.3	15.00 381.0	6.750 171.4	2.190 55.60	3.380 85.80	2.250 57.15	9.250 234.9	8.500 215.9	12	1.250 31.70	12.50 317.5	41.1
8	8.625 219.1	18.50 469.9	8.750 222.2	2.500 63.50	4.000 101.6	2.500 63.50	11.75 298.4	10.62 269.7	12	1.500 38.10	15.50 393.7	70.7
10	10.75 273.0	21.50 546.1	10.88 276.3	2.750 69.85	4.250 107.9	2.810 71.40	14.50 368.3	12.75 323.9	16	1.500 38.10	18.50 469.9	101
12	12.75 323.8	24.00 609.6	12.94 328.7	3.120 79.40	4.620 117.3	3.000 76.20	16.50 419.1	15.00 381.0	20	1.500 38.10	21.00 533.4	133
14	14.00 355.6	25.25 641.3	14.19 360.4	3.380 85.70	5.120 130.0	3.250 82.50	17.75 450.8	16.25 412.7	20	1.620 41.10	22.00 558.8	153
16	16.00 406.4	27.75 704.8	16.19 411.2	3.500 88.90	5.250 133.3	3.380 85.90	20.00 508.0	18.50 469.9	20	1.750 44.40	24.25 618.9	185
18	18.00 457.2	31.00 787.4	18.19 462.0	4.000 101.6	6.000 152.4	3.500 88.90	22.25 565.1	21.00 533.4	20	2.000 50.80	27.00 685.8	258
20	20.00 508.0	33.75 857.2	20.19 512.8	4.250 107.9	6.250 158.7	3.620 91.90	24.50 622.3	23.00 584.2	20	2.120 53.80	29.50 749.3	317
24	24.00 609.6	41.00 1041.4	24.19 614.4	5.500 139.7	8.000 203.2	4.000 101.6	29.50 749.3	27.25 692.2	20	2.620 66.55	35.50 901.7	606

#### Notes

- The thread conforms to ASME B1.20.1 NTP threads as described in Section 10. (The only exceptions are small male and female plain face threaded flanges which use NPSL locknut threads.)
- Class 300 and higher threaded flanges are counter-bored. Threads are chamfered to the counterbore at an angle of 45° (approx).
- Weights are based on manufacturer's data and are approximate.

# ZIZI ENGINEERING CO LTD

## Threaded Flanges - ANSI B16.5



### Class 1500 lb

Pipe		Flange Data					Hub	Raised Face	Drilling Data			Weight
Nominal Pipe Size		<b>A</b>	<b>B</b>	<b>C</b>	<b>D</b>	<b>E</b>	<b>F</b>	<b>G</b>	<b>H</b>	<b>I</b>	<b>J</b>	
	Outside Diameter	Overall Diameter	Counter-bore min	Flange Thickness min	Overall Length	Threaded length min	Hub Diameter	Face Diameter	Number of Holes	Bolt Hole Diameter	Diameter of Circle of Holes	kg/ piece
	in mm	in mm	in mm	in mm	in mm	in mm	in mm	in mm		in mm	in mm	
1/2	0.840	4.750	0.930	0.880	1.250	0.880	1.500	1.380	4	0.880	3.250	1.74
	21.30	120.6	23.60	22.30	31.70	22.30	38.10	35.00		22.30	82.50	
3/4	1.050	5.120	1.140	1.000	1.380	1.000	1.750	1.690	4	0.880	3.500	2.34
	26.70	130.0	29.00	25.40	35.00	25.40	44.40	42.90		22.30	88.90	
1	1.315	5.880	1.410	1.120	1.620	1.120	2.060	2.000	4	1.000	4.000	3.44
	33.40	149.3	35.80	28.40	41.10	28.40	52.30	50.80		25.40	101.6	
1 1/4	1.660	6.250	1.750	1.120	1.620	1.190	2.500	2.500	4	1.000	4.380	3.91
	42.20	158.7	44.40	28.40	41.10	30.20	63.50	63.50		25.40	111.2	
1 1/2	1.900	7.000	1.990	1.250	1.750	1.250	2.750	2.880	4	1.120	4.880	5.36
	48.30	177.8	50.50	31.70	44.50	31.70	69.85	73.15		28.40	123.9	
2	2.375	8.500	2.500	1.500	2.250	1.500	4.120	3.620	8	1.000	6.500	9.85
	60.30	215.9	63.50	38.10	57.15	38.10	104.6	91.90		25.40	165.1	
2 1/2	2.875	9.620	3.000	1.620	2.500	1.880	4.880	4.120	8	1.120	7.500	13.7
	73.00	244.3	76.20	41.10	63.50	47.70	123.9	104.6		28.40	190.5	

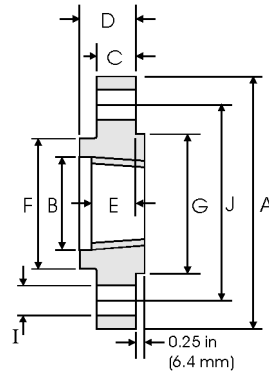
#### Notes

- The thread conforms to ASME B1.20.1 NTP threads as described in Section 10. (The only exceptions are small male and female plain face threaded flanges which use NPSL locknut threads.)
- Class 300 and higher threaded flanges are counter-bored. Threads are chamfered to the counter-bore at an angle of 45° (approx).
- Weights are based on manufacturer's data and are approximate.

# ZIZI ENGINEERING CO LTD



## Threaded Flanges - ANSI B16.5



### Class 2500 lb

Pipe		Flange Data					Hub	Raised Face	Drilling Data			Weight
Nominal Pipe Size		A	B	C	D	E	F	G	H	I	J	
	Outside Diameter	Overall Diameter	Counter-bore min	Flange Thickness min	Overall Length	Threaded length min	Hub Diameter	Face Diameter	Number of Holes	Bolt Hole Diameter	Diameter of Circle of Holes	kg/ piece
	in mm	in mm	in mm	in mm	in mm	in mm	in mm	in mm		in mm	in mm	
1/2	0.840 21.30	5.250 133.4	0.930 23.60	1.190 30.20	1.560 39.60	1.120 28.40	1.690 42.90	1.380 35.10	4	0.880 22.40	3.500 88.90	2.95
3/4	1.050 26.70	5.500 139.7	1.140 29.00	1.250 31.75	1.690 42.90	1.250 31.75	2.000 50.80	1.690 42.90	4	0.880 22.40	3.750 95.30	3.44
1	1.315 33.40	6.250 158.8	1.410 35.80	1.380 35.10	1.880 47.80	1.380 35.10	2.250 57.15	2.000 50.80	4	1.000 25.40	4.250 108.0	4.82
1 1/4	1.660 42.20	7.250 184.2	1.750 44.50	1.500 38.10	2.060 52.30	1.500 38.10	2.880 73.15	2.500 63.50	4	1.120 28.40	5.120 130.0	7.14
1 1/2	1.900 48.30	8.000 203.2	1.990 50.50	1.750 44.50	2.380 60.45	1.750 44.50	3.120 79.25	2.880 73.15	4	1.250 31.75	5.750 146.1	10.0
2	2.375 60.30	9.250 235.0	2.500 63.50	2.000 50.80	2.750 69.85	2.000 50.80	3.750 95.30	3.620 91.90	8	1.120 28.40	6.750 171.5	14.8
2 1/2	2.875 73.00	10.50 266.7	3.000 76.20	2.250 57.15	3.120 79.25	2.250 57.15	4.500 114.3	4.120 104.6	8	1.250 31.75	7.750 196.9	21.5

#### Notes

- The thread conforms to ASME B1.20.1 NTP threads as described in Section 10. (The only exceptions are small male and female plain face threaded flanges which use NPSL locknut threads.)
- Class 300 and higher threaded flanges are counter-bored. Threads are chamfered to the counterbore at an angle of 45° (approx).
- Weights are based on manufacturer's data and are approximate.